

# VTI 20 MHz Microvascular Doppler System for Neurosurgery

**The essential and cost effective intraoperative microvascular instrument that provides you with the *sound* information you need**

## The VTI 20 MHz Microvascular Doppler System

is ideal for intraoperative use in neurosurgical procedures. Combining a miniature probe tip with a high operating frequency, the system emits a tightly focused signal with a shallow depth of signal penetration, imparting a level of precision essential for the neurosurgeon. The sterile -- out-of-the-package, single-use probes -- optimize patient safety and eliminate probe failure due to reprocessing.

## Neurosurgical applications

- Determine patency of parent and branching vessels after aneurysm clipping
- Assess completeness of aneurysm clipping
- Locate feeder artery in AVMs
- Locate major venous sinuses
- Confirm patency of major venous sinuses
- Confirm patency of microvascular anastomoses
- Localize vessels noted on angiogram

## Neurosurgeons appreciate many benefits of the VTI Microsurgical Doppler System

- Real-time arterial and venous audio feedback immediately confirms results of surgical interventions
- Always ready-to-use, sterile probes
- High operating frequency provides tightly focused signal
- Bayonette style probe facilitates use under microscope
- Miniature probe tip provides high degree of precision without obscuring field of view
- Reduces the need for intraoperative angiograms - saves time and money
- Economical and easy-to-use

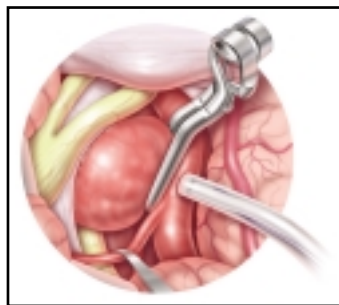
*During intracranial aneurysm clipping, use of an intraoperative microvascular Doppler resulted in clip repositioning in 24-31% of patients*

Bailes, et al., Neurosurgery 1997 May;40(5):965-70.

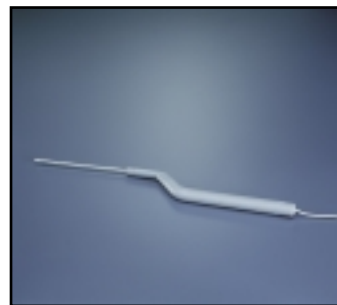
Firsching, et al., Minim Invasive Neurosurg 2000 Sep;43(3):144-8.



The compact, battery-operated transceiver unit delivers a tightly focused signal, making the unit ideal for microvascular use. It provides loud and clear portrayals of arterial and venous blood flow during neurosurgical procedures.



During intracranial aneurysm clipping, the VTI 20 MHz Microvascular Doppler confirms the results of surgical intervention and helps save time and money by reducing the need for intraoperative angiograms.



VTI's neurosurgical probe is designed specifically for microsurgical use. It incorporates a bayonette shaped handle and a miniature tip making it ideal for use under a microscope, without obscuring the surgical field of view.

12 Murphy Drive, Nashua, NH 03062

Toll Free: 800.550.0856 Outside USA: 603.594.9700 Fax: 603.594.0092

www.vti-online.com E-mail: info@vti-online.com

