

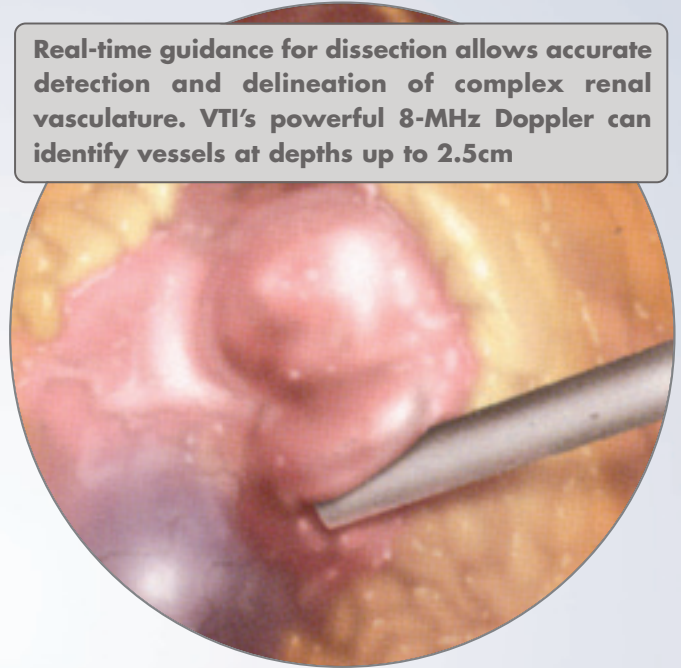
THE SOUND SOLUTION

VTI LAPAROSCOPIC DOPPLER SYSTEM

As a Urologist you expect the unexpected during laparoscopic renal surgery. Always aware that renal anatomy can vary between 25 and 40%, you proceed cautiously, knowing that the dissection and control of the renal hilum often proves to be one of the most difficult aspects of the procedure. The VTI 8-MHz Laparoscopic Doppler System is designed to meet this challenging aspect of the surgery by helping you to eliminate the unexpected.

VTI's Laparoscopic Doppler System allows for the accurate detection and delineation of complex renal vasculature. By providing real-time intraoperative guidance for dissections, and facilitating the evaluation of pre- and post-clamping flow status, the VTI system provides a SOUND SOLUTION to the challenges of laparoscopic urological surgery.

Real-time guidance for dissection allows accurate detection and delineation of complex renal vasculature. VTI's powerful 8-MHz Doppler can identify vessels at depths up to 2.5cm



Applications in Laparoscopic Surgery:

- *Radical Nephrectomy* - facilitates dissection and control of renal hilum
- *Partial Nephrectomy* - evaluates pre- and post-clamping blood flow
- *Robotic Pyeloplasty* - allows for identification of crossing vessels

Features & Benefits of the VTI Laparoscopic Doppler System:

- Powerful 8-MHz Doppler Frequency
- Identifies vessels up to 2.5cm deep
- Sterile, ready-to-use probes
- Specifically designed for intraoperative use
- Provides real-time evaluation of vasculature
- Delivers distinct arterial and venous signals
- Economical and easy to use (No special training required)

VTI Surgical Doppler Systems are also available for use in Vascular, Neurological, Cardiovascular, Plastic/Reconstructive, GI Endoscopic and general procedures.



Vascular Technology
HEARING IS BELIEVING

